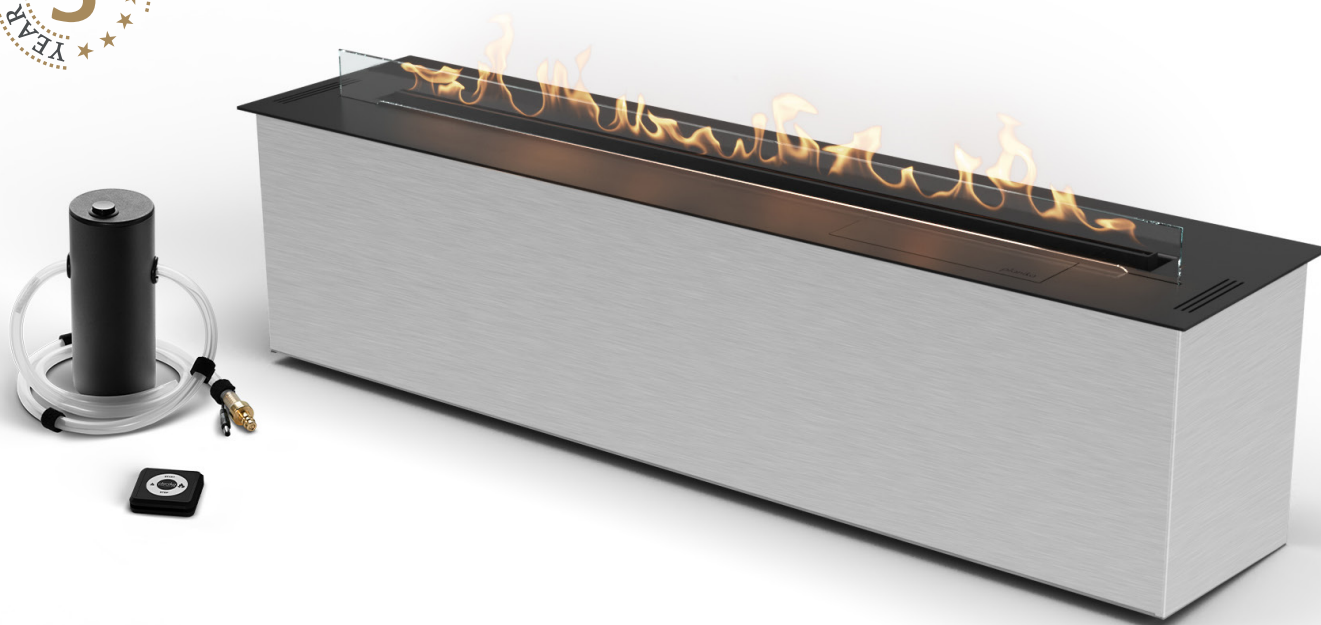


# FIRE LINE AUTOMATIC 4+ (1190mm)

## AUTOMATIC BEV® BURNER

*Net Zero fireplace with the BEV Technology®*



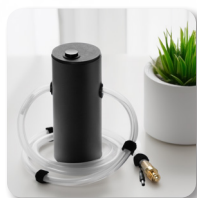
### AUTOMATIC BEV® BURNER

The BEV Technology® guarantees burning that is free of smoke, odor, or ash. This technology creates a flame by burning ethanol vapors, ensuring that the fire has no direct contact with the liquid fuel.



### REMOTE CONTROL

Easily control your fireplace with the handy remote. You're in charge of the flames. Go for one of 6 flame levels to adjust the ambience and coziness to your needs.



### AUTOMATIC REFILLING

The automatic pump communicates with the device, delivering the necessary amount of fuel. There is no risk of overfilling the tank or spilling the fuel.



### TOUCH CONTROL PANEL

Experience the ultimate convenience with the LCD touch control panel. Easily adjust the fireplace settings, check fuel levels, or set a shut-off timer. Additionally, the child lock feature ensures safety for the youngest users.



### MOBILE APP

A fireplace controlled by an app offers the convenience of adjusting flame settings and ambience remotely, enhancing comfort and ease of use.



### OPTIONAL DECORATIVE LOGS

Enhance your fireplace's aesthetic with our optional trays with new decorative logs, adding a touch of elegance and warmth to any room.

## Fire Line Automatic 4+ (1190mm) (BEV Technology®)

|                         |   |
|-------------------------|---|
| Fuel tank capacity      | 21.0 L                                  |
| Maximum burn time       | 30 hours                                |
| Maximum heat output     | 9.4 kW                                  |
| Minimum room cubature   | 94 m <sup>3</sup>                       |
| Flame height regulation | 6 stages                                |
| Weight                  | 44.0 kg                                 |
| Fuel type               | bioethanol 95 - 96,6%                   |
| Flue                    | not required                            |
| Air change rate         | 1 space volume per hour                 |
| Power supply            | 230 V                                   |
| Finish                  | black powder coating                    |
| Materials               | steel, galvanized steel, tempered glass |
| Application             | for indoor use only                     |

### CONTROL OPTIONS



included



included



optional

### 'PLANIKA BEV' APP

Control the fire with your smartphone!



FREESTANDING



ROOM DIVIDER

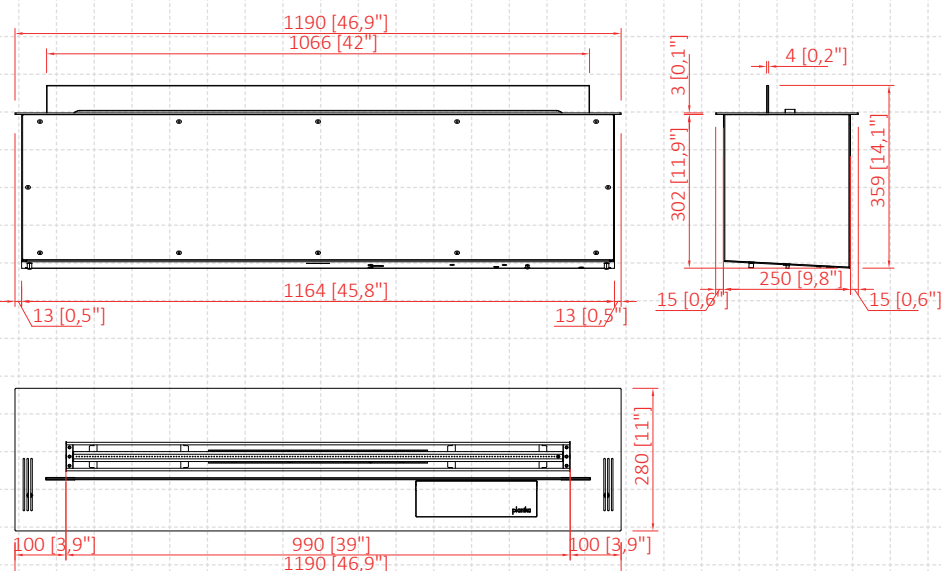
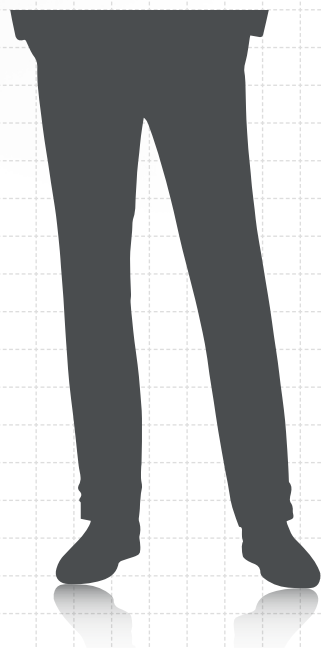


TUNNEL



ISLAND

Freestanding, Room Divider, Tunnel and Island housings require FLA4 with Frame & Glass Panels



custom burner finish  
in RAL palette colour



custom length  
available on request

