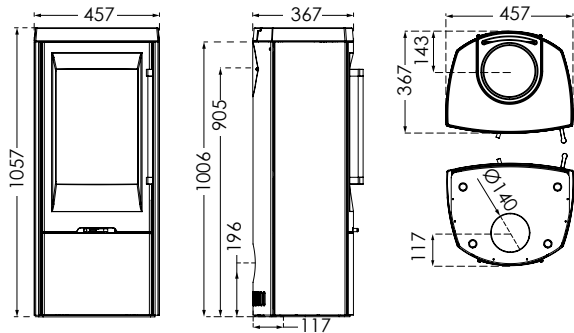


# TT30 SERIES TECHNICAL SPECIFICATIONS

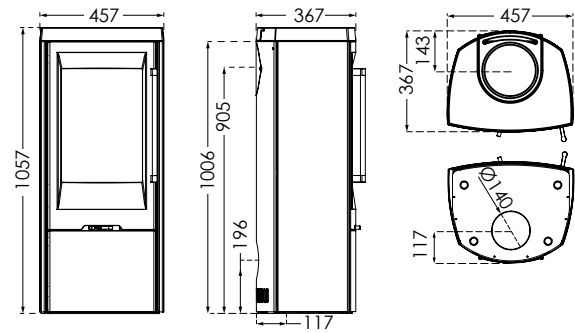
## TT30

Combustion chamber W/D: 320/236 Weight in kg: 126



## TT30S

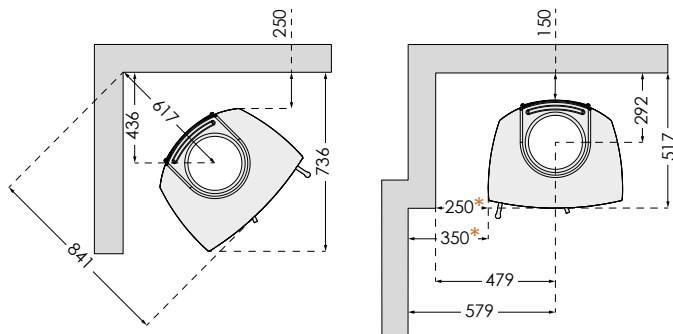
Combustion chamber W/D: 320/236 Weight in kg: 160



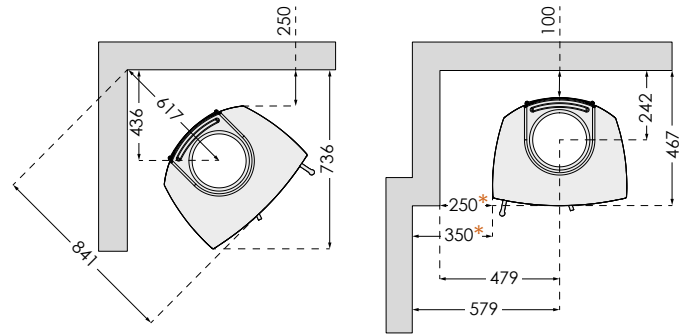
## DISTANCE TO COMBUSTIBLE MATERIAL

## TT30/TT30S

### WITH UNINSULATED FLUE PIPE



### WITH INSULATED FLUE PIPE



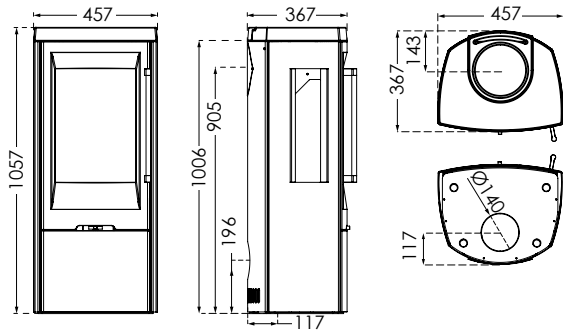
In order to avoid discolouration of painted and treated surfaces, TernaTech recommends the same distance from flammable materials as for non-flammable materials. This distance increases the convection itself around the stove and also eases cleaning. All distances relate solely to the distance of the stove from flammable materials. No account has been taken of national requirements for the use of stove flues or their distance from flammable materials.

\* Distance to side wall min. 250mm up to the front of the stove, subsequently min. 350mm.

# TT30 SERIES TECHNICAL SPECIFICATIONS

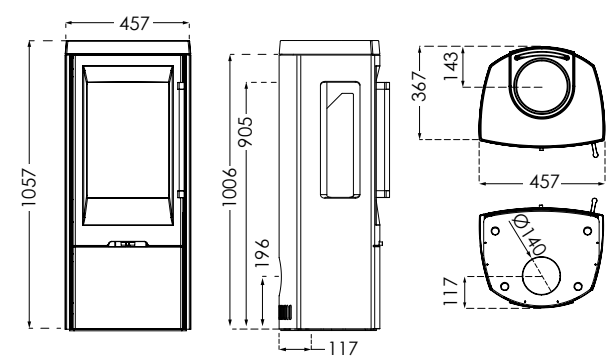
## TT30G

Combustion chamber W/D: 320/236 Weight in kg: 123



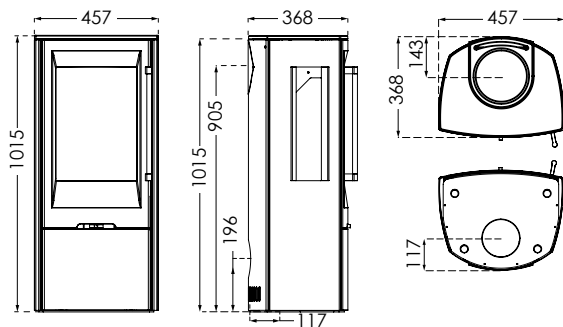
## TT30GS

Combustion chamber W/D: 320/236 Weight in kg: 151



## TT30G CLASSIC

Combustion chamber W/D: 320/236 Weight in kg: 108

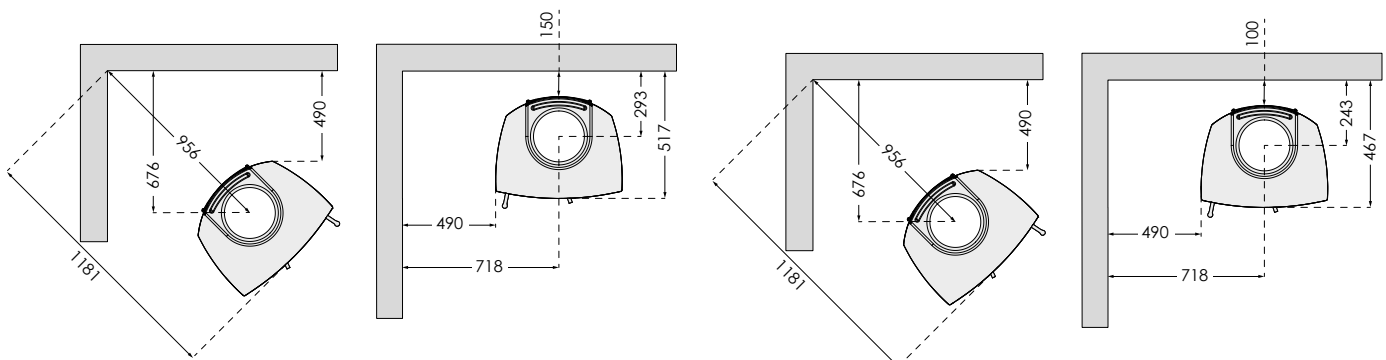


## DISTANCE TO COMBUSTIBLE MATERIAL

## TT30G/TT30GS/TT30G CLASSIC

### WITH UNINSULATED FLUE PIPE

### WITH INSULATED FLUE PIPE



In order to avoid discolouration of painted and treated surfaces, TernaTech recommends the same distance from flammable materials as for non-flammable materials. This distance increases the convection itself around the stove and also eases cleaning. All distances relate solely to the distance of the stove from flammable materials. No account has been taken of national requirements for the use of stove flues or their distance from flammable materials.

*NB! All height dimensions are without adjusting feet. Measurements are in mm.*